

OPLAADMOGELIJKHEDEN

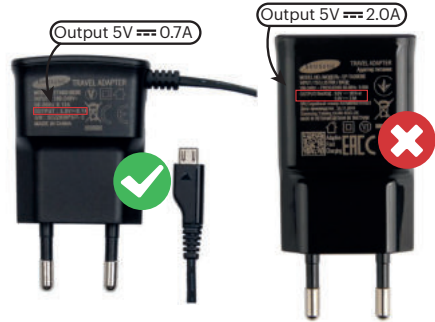
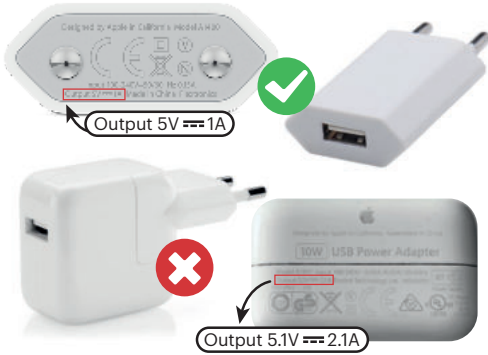
Ter aanvulling op reeds bijgesloten handleiding nog extra informatie. USB-kabelingang: 5V-1A

- * Alleen adapters gebruiken die output 5V-1A aangeven.
- * Dit is leesbaar op de adapter, zie onderstaande voorbeelden.
- * Of gebruik de USB 1.0 aansluiting van je computer of laptop.
- * Gebruik geen power adapter of snelladers.

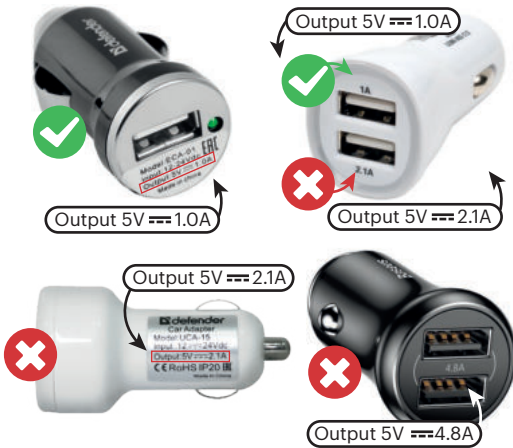
STAPPEN VOOR GEBRUIK – SPECIALE INSTRUCTIES

- * Na oplaadtijd van 70 minuten de stekker uit het stopcontact halen.
- * De oplaaddoos niet opladen zonder gepast toezicht.
- * De oplaadkabel altijd helemaal uitrollen tijdens het gebruik van opladen.
- * Stop eerst de stekker in de oplaaddoos, vervolgens de stekker in de adapter en daarna in het stopcontact.

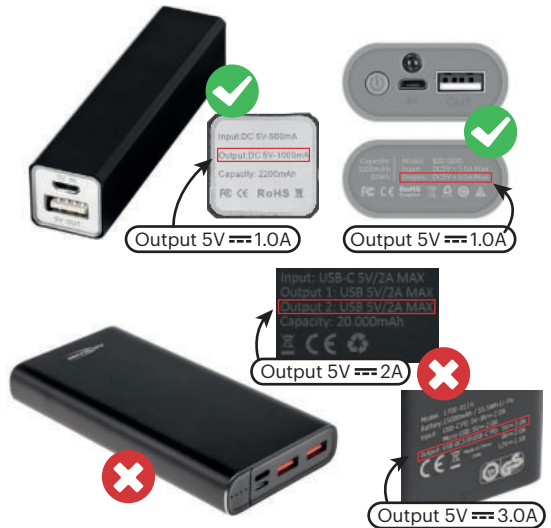
OPLADERS/ADAPTERS



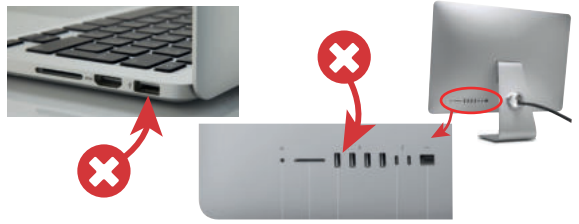
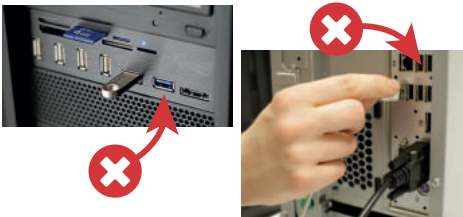
AUTO OPLADERS



POWERBANKS



USB/COMPUTER

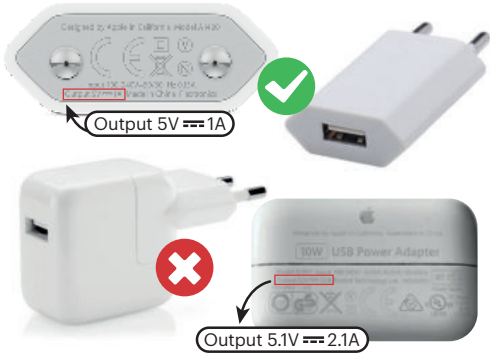


CHARGING OPTIONS

As addendum to the manual that is enclosed in the box with the product hereby extra information. USB- cable input: 5V-1A

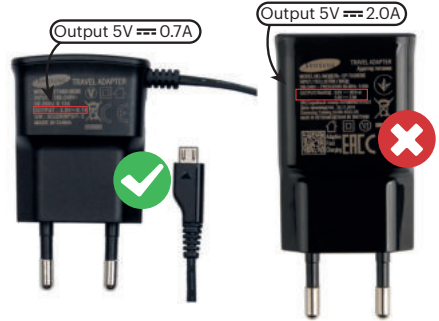
- * Only use adapters that show 5V-1A. This information is readable on the adapter, see below examples.
- * Do not use power adapters or fast chargers.
- * Do not use the USB connection in your computer/iMac, laptop/Macbook.

CHARGERS / ADAPTERS

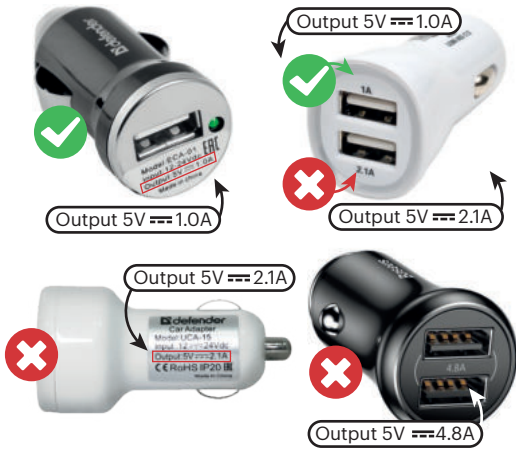


STEPS FOR USE – SPECIAL INSTRUCTIONS

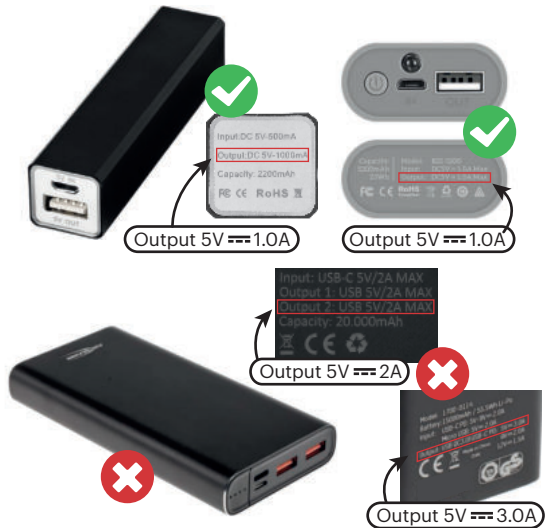
- * After the charging time of 70 minutes, remove the adapter from the power socket.
- * Do not charge the charging box without proper supervision.
- * Always unfold the charging cable when charging.
- * First insert the plug into the charging box, then the plug into the adapter and then into the power socket.



AUTO CHARGERS



POWER BANKS



USB/COMPUTER

